

How to Install JMAG (v19.0)

Note: To install the new version of JMAG proceed to Step #1. To update a license file, proceed to Step #21

NEW INSTALLATION OF JMAG

1. JMAG designer Version 19.0 can be downloaded from the JMAG-International website under Support>Downloads>JMAG-Designer section or directly from the link:
<https://www2.jmag-international.com/support/en/download/designer/v190/index.html>

The customer User Name and Password are provided with the license file (an example is below)

ID: MSEXXXX

Password: XXXXXX

2. Download the JMAG package based on your Operating system (Windows or Linux).

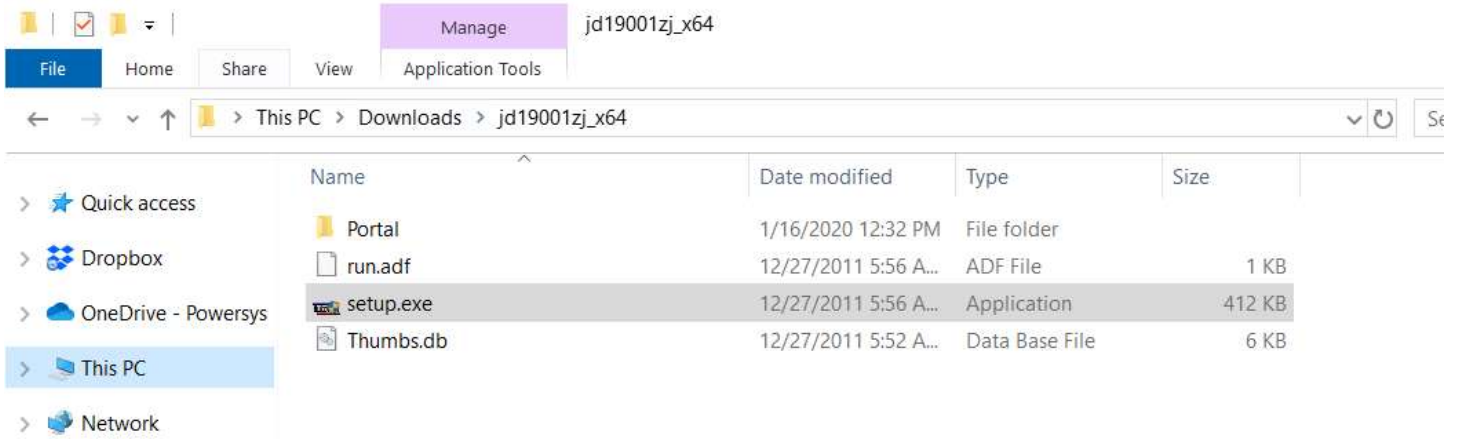
Note 1: Starting with v16.0 of JMAG, 32-bit Windows machines will no longer be supported.

Note 2: If there is an error when trying to run the executable file after downloading, the problem may come from an unstable network connection. If you are experiencing frequent disconnects, you can download the "Partitioned Files" to get around this issue.

OS	Download File	File name	Size	Updated
Windows / Linux	Installation manual	installationmanual_en.pdf	2.04MB	2020-01-16
	ReleaseNote(full)	JMAGReleaseNotes_190001_full_en.pdf	0.76MB	2020-01-16
Windows 64bit Ver.19.0.01zj	Single Download	jd19001zj_x64.EXE	3.11GB	2020-01-16
	Partitioned files	Partitioned files download	-	2020-01-16
Linux FullEdition 64bit Ver.19.0.01zj	Single Download	jd19001zj.tar.gz	2.54GB	2020-01-16
	Partitioned files	Partitioned files download	-	2020-01-16

3. *Note: It is not required to uninstall previous versions of JMAG when installing a newer version.* If you have a previous version of JMAG and license server already installed and wish to uninstall those, proceed to step 4. Otherwise please proceed to step 6.
4. Uninstall previous versions of JMAG Designer and any other JMAG Program.
5. Uninstall the JRI FLEXLM or LM-X service.
6. From the location where the new version installer is placed, double click on the downloaded file (e.g., jd19001zj_x64.exe) to unzip the contents.
7. Double click on the unzipped folder to see its contents and double click on "setup.exe" (see image below).

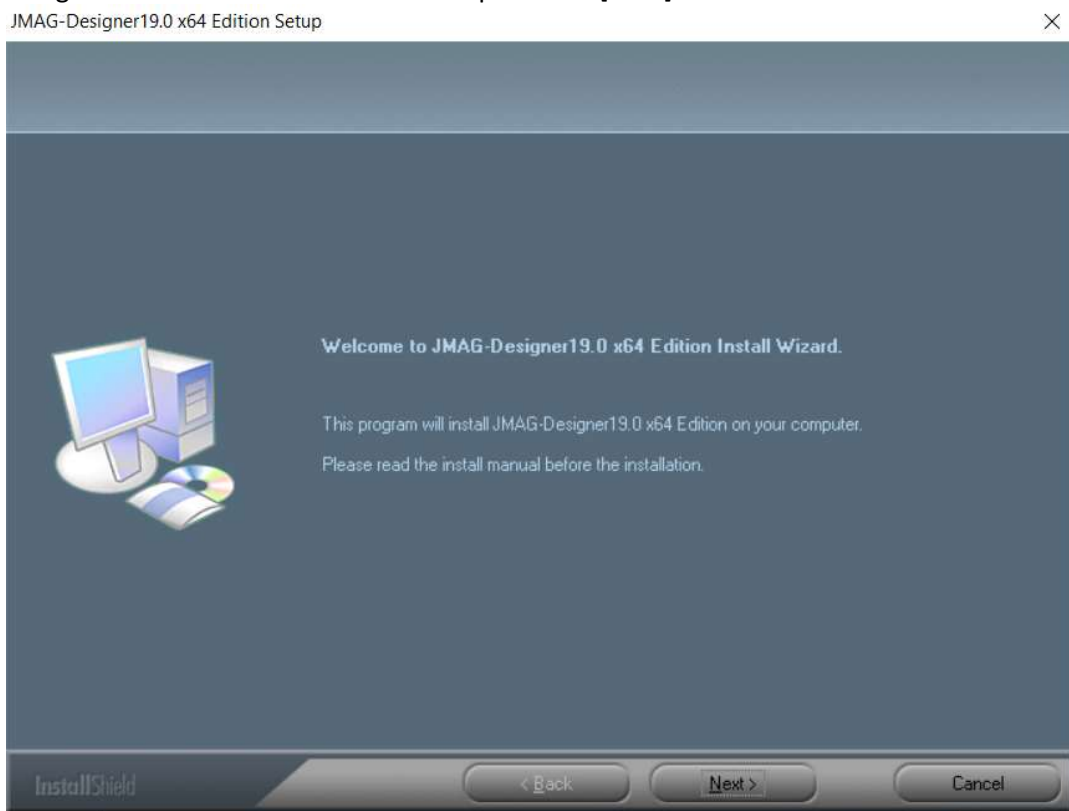
Note: It is recommended that setup.exe be run by selecting "Run as Administrator". If you do not have Administrative Rights on the computer, please make sure that there is someone from the IT department that can help with this.



- The JMAG Portal window will open. Click on the [Install] tab on the explorer window. Only the 64-bit version of JMAG will be available for installation.



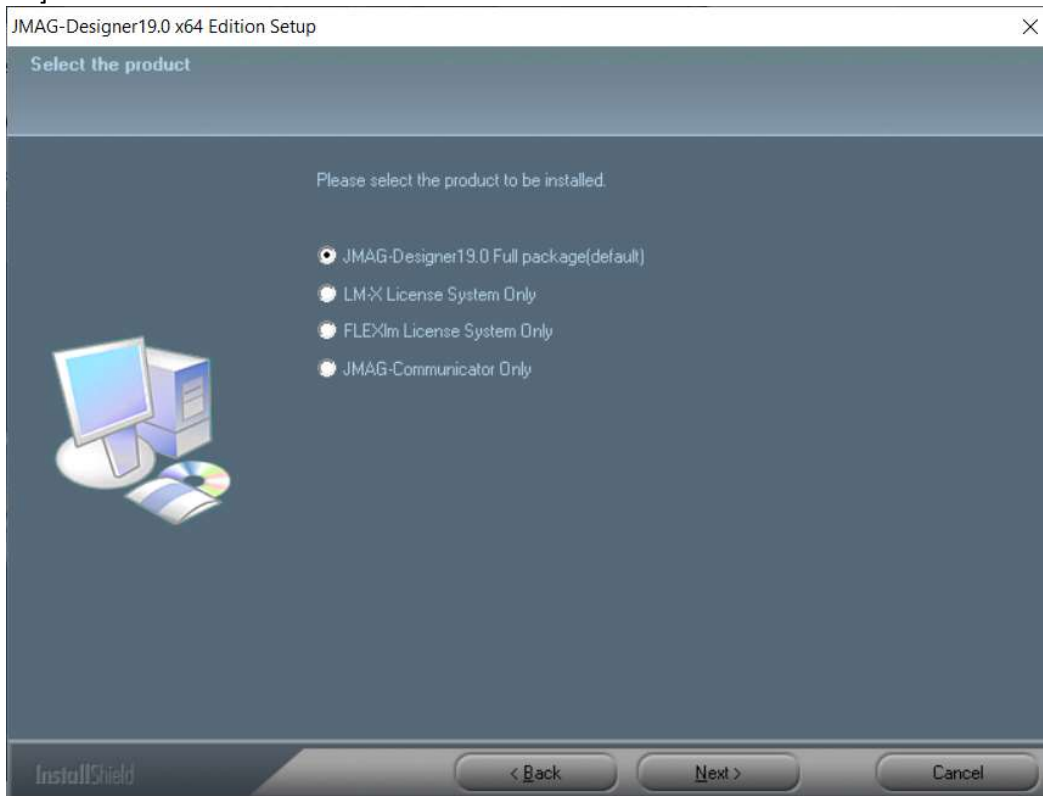
9. JMAG-Designer 19.0 installation window will open. Click [Next]



10. The option [JMAG-designer 19.0 Full package(default)] is recommended.

Please note: JMAG v17.0 introduces a change to the license server system. The LM-X License system is for users who make use of the Power Simulation License.

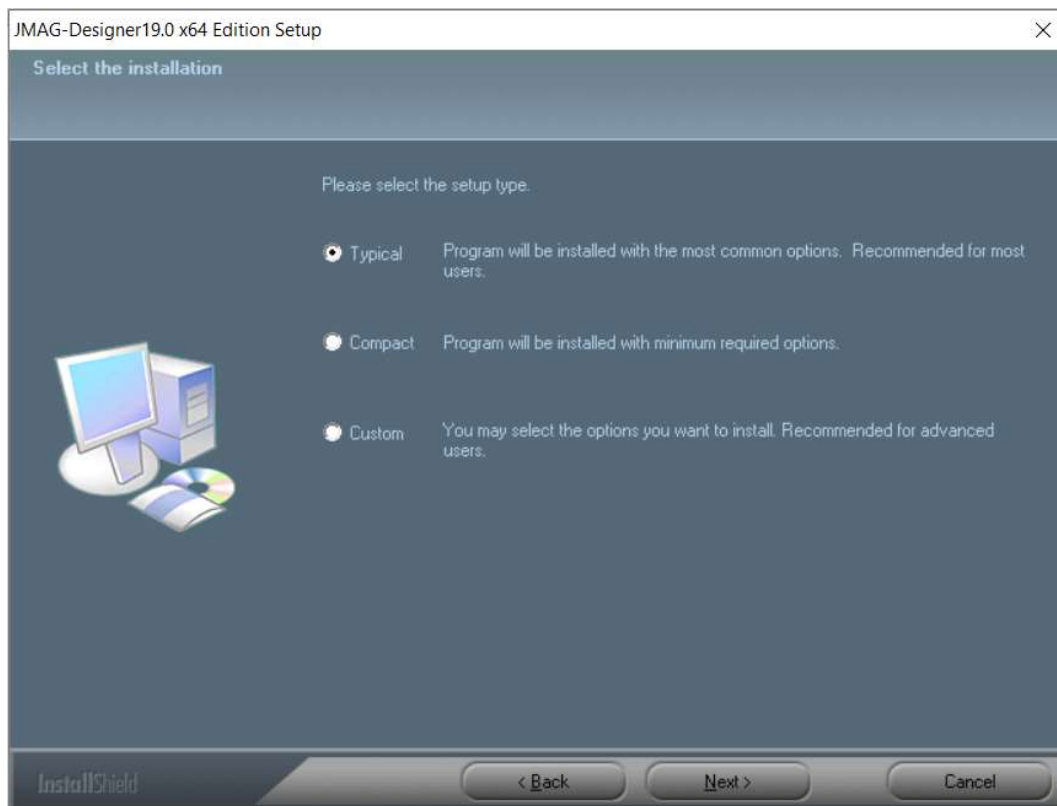
Click [Next]



11. If you want to change the installation location, click on [Browse...] and choose the location on your computer that you would like to install JMAG Designer. Then click [Next]



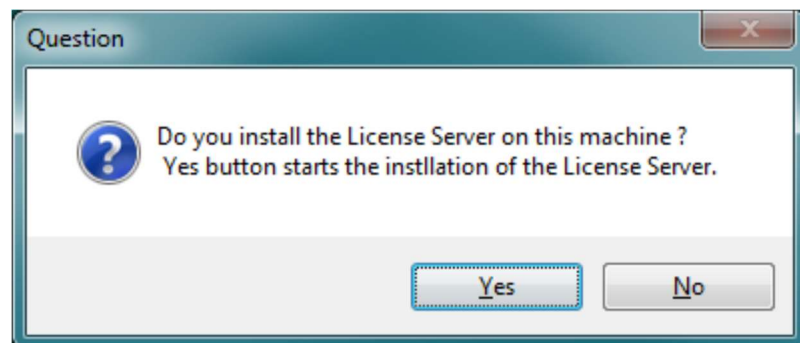
12. The option [Typical] is selected by default. Click on [Next]



13. Clicking on [Next] will start the JMAG Designer 19.0 installation. This may take few minutes.

14. After the JMAG Designer installation, a window will pop up to install the license server installation. Click [Yes] if the license is to be hosted locally (i.e., on this machine).

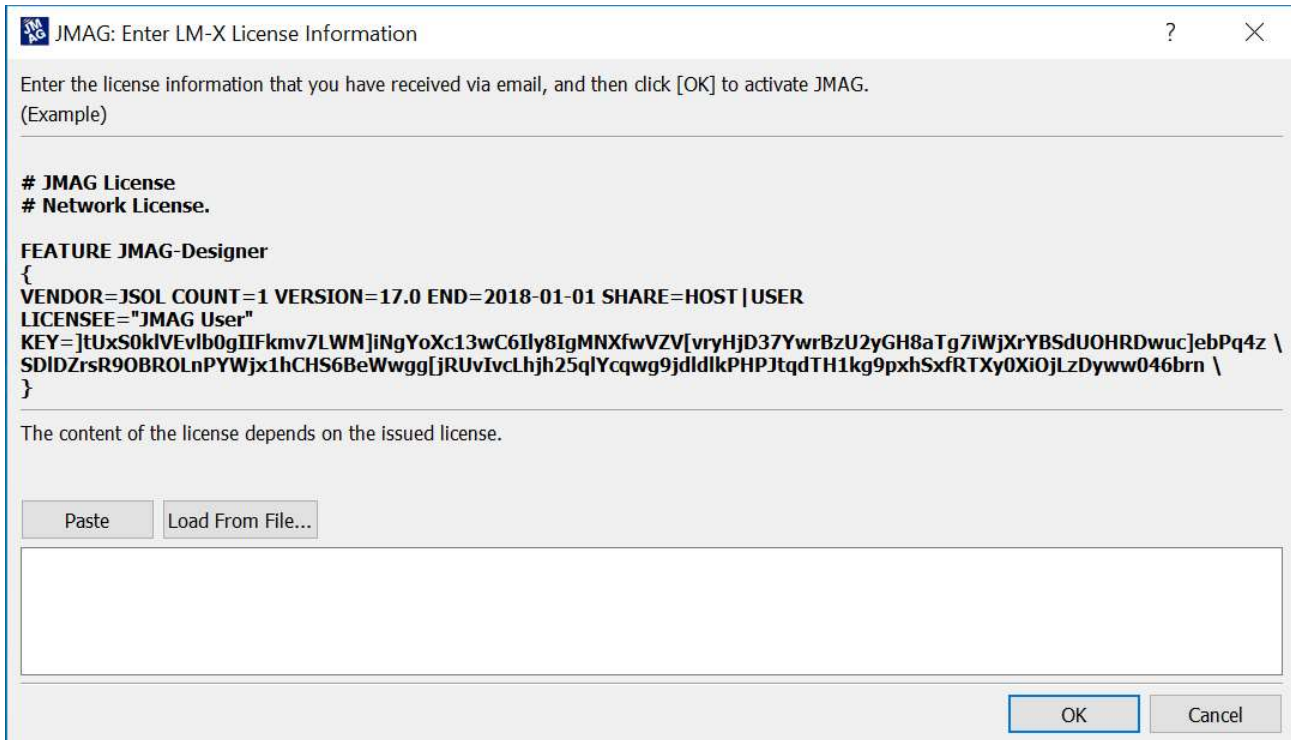
Note: If the license is to be hosted on a separate machine, select [No]. The server machine can be specified once JMAG-Designer is started for the first time.



15. Click on [Enter License Information]



16. Copy and paste the contents of the provided license file in this window and click [OK]. You can also Load the license information directly by clicking on [Load From File...] and searching for the license file.



17. The license file should be formatted as shown below:

File Edit Format View Help

JMAG License

Nodelock or Network License.

{contact#XXXXX} COMPUTER_NAME PRIMARY_MAC_ADDRESS|

FEATURE JMAG-Designer

{

VENDOR=JSOL COUNT=1 KEYTYPE=ADDITIVE VERSION=18.0 END=2019-05-20 SHARE=HOST|USER COMMENT="

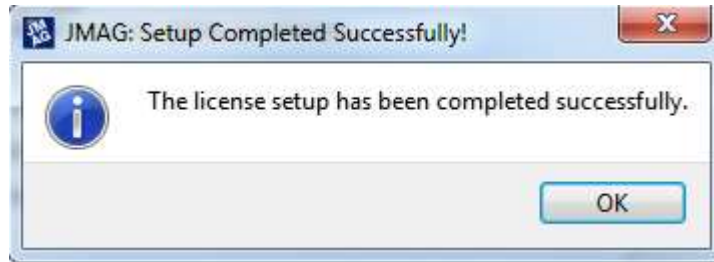
KEY=kIbrBs]QSYmG2CRgAdrTxjzTKH39PxRV]YIkyT70qfypoI4nrNj958tOuBDpPhEF8KyujmQdu]oSyQuhXHMPfs

AqMERhF8ep1rYJJIXX01AZqAWRPa5kihiQBmoR69jWCylcY[s6tYSKbBg[DYoLCNY2tI4[gYxYeJB6anJj

DCPo]eVWeAYphBxeUaP]TIJSwTcUu11hopLizqG9TEs45VYaA7j]xCX5Vps9S7qY5niwcvtBFU1MIpeYPy

QVebDhUQsKvT1X01iCkY1rCTOX1rQvTPvmb0f62uTCdihYsck2x021MvTyTtFTtF4873eihc41r730d1

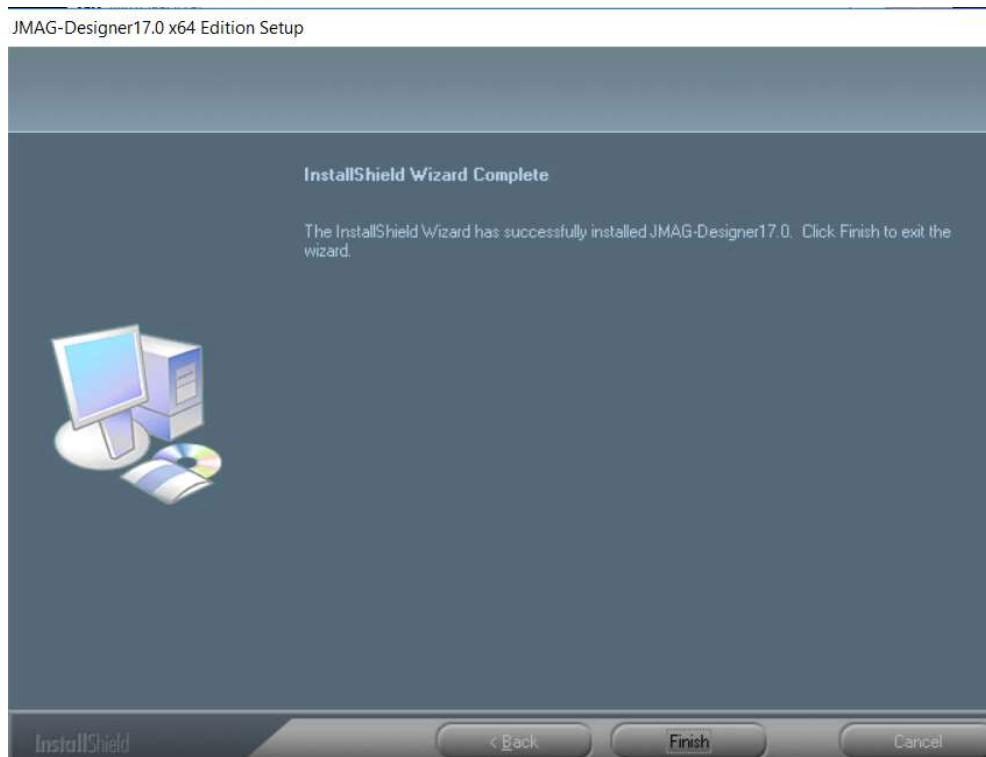
18. If the license file is valid and can be read successfully, the message below will appear:



19. After this point the installer will prompt for the installation of additional Tools:

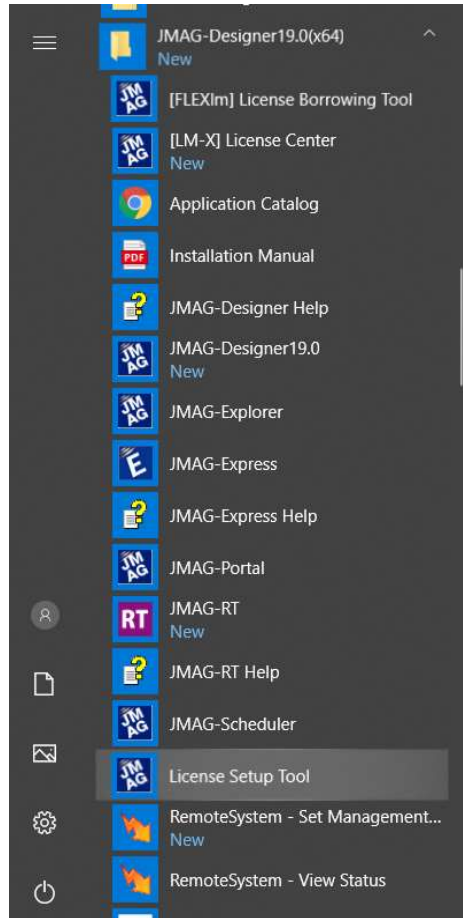
- JMAG Communicator (Optional, necessary for SolidWorks CAD import)
- JMAG VTB (Not Recommended)
- JMAG RT Viewer (Recommended)
- Remote System-View Status (Recommended if running JMAG solvers remotely)

20. The window below will appear once the setup has been finished. Please click on [Finish] to exit the installation wizard.

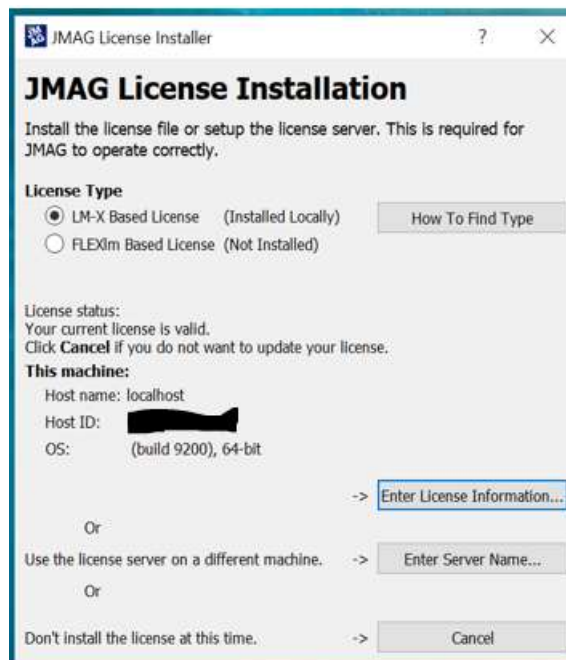


UPDATING THE CURRENT JMAG LICENSE FILE

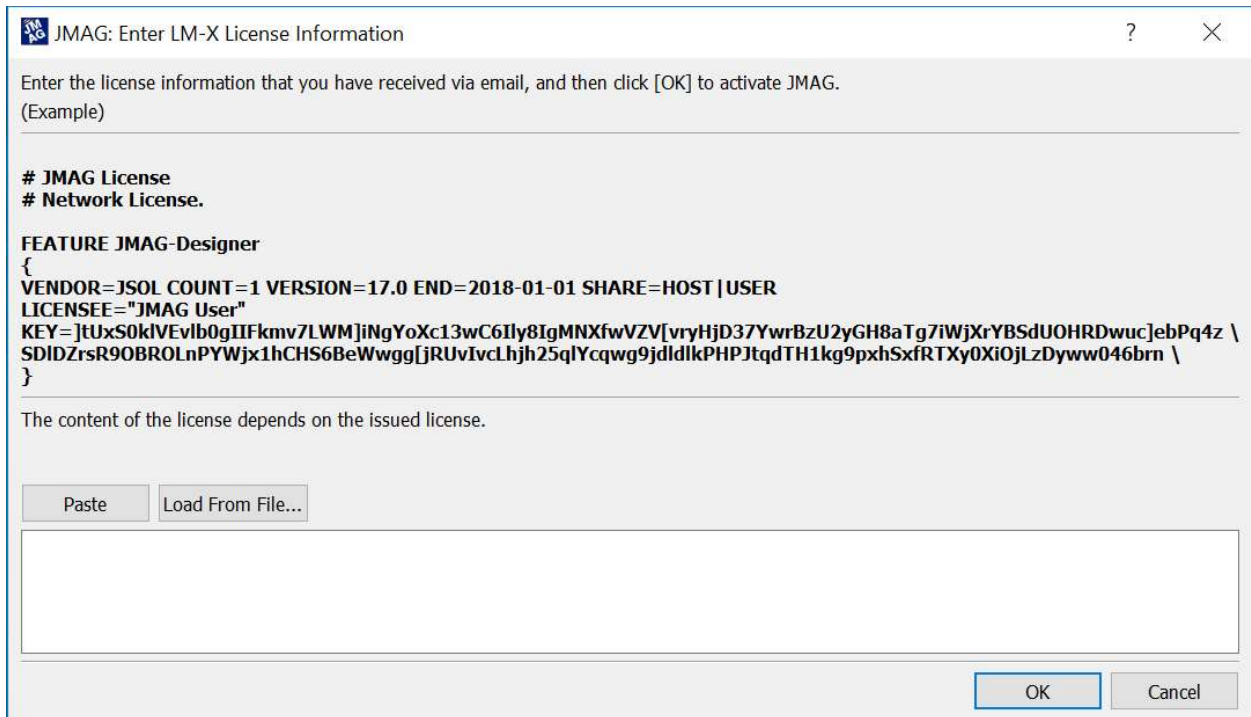
21. Go to the Start Menu, look for JMAG Designer (your current version) and move cursor over the License Setup Tool. By clicking right button, choose More>Run as administrator.



22. Select “Enter License Information”



23. Copy and paste the contents of the provided license file in this window and click [OK]. You can also Load the license information directly by clicking on [Load From File...] and searching for the license file.



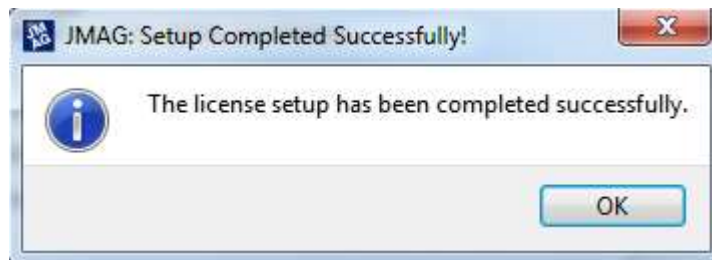
24. The license file should be formatted as shown below:

File Edit Format View Help

```
# JMAG License
# Nodelock or Network License.
# {contact#XXXXXX} COMPUTER_NAME PRIMARY_MAC_ADDRESS]

FEATURE JMAG-Designer
{
VENDOR=JSOL COUNT=1 KEYTYPE=ADDITIVE VERSION=18.0 END=2019-05-20 SHARE=HOST |USER COMMENT="
KEY=kIbrBs]QSYmG2CRgAdrTxjzTKH39PxRV]YIkyT70qfypoI4nrNj958tOuBDpPhEF8KyujmQdu]oSyQuhXHmpfs
AqMERhF8ep1rYJJIXX01AZqAWRPa5kihiQBmOR69jWcylcY[s6tYSKbBg[DYoLCNY2tI4[gYxYeJb6anJj
DCPo]eVWeAYphBxeUaP]TIJSwTcUu11hopLizqG9TEs45VYaA7j]xCX5Vps9S7qY5niwcvtBFU1MIpeYPy
Q]VebDUU]Qsk]T]X01iC+V]rCTOX]r]Q]v]T]v]m]b]Q]f]s]r]T]C]d]i]k]e]k]2]v]Q]1]M]V]T]t]F]T]F]4]B]7]1]i]b]4]r]7]2]d]i]
```

25. If the license file is valid and can be read successfully, the message below will appear:



NOTE: If a license error occurs when opening JMAG, try restarting the system so that the environment variables are reset. If that does not fix the issue, please contact JMAG Support (jmagsupport@powersys-solutions.com).